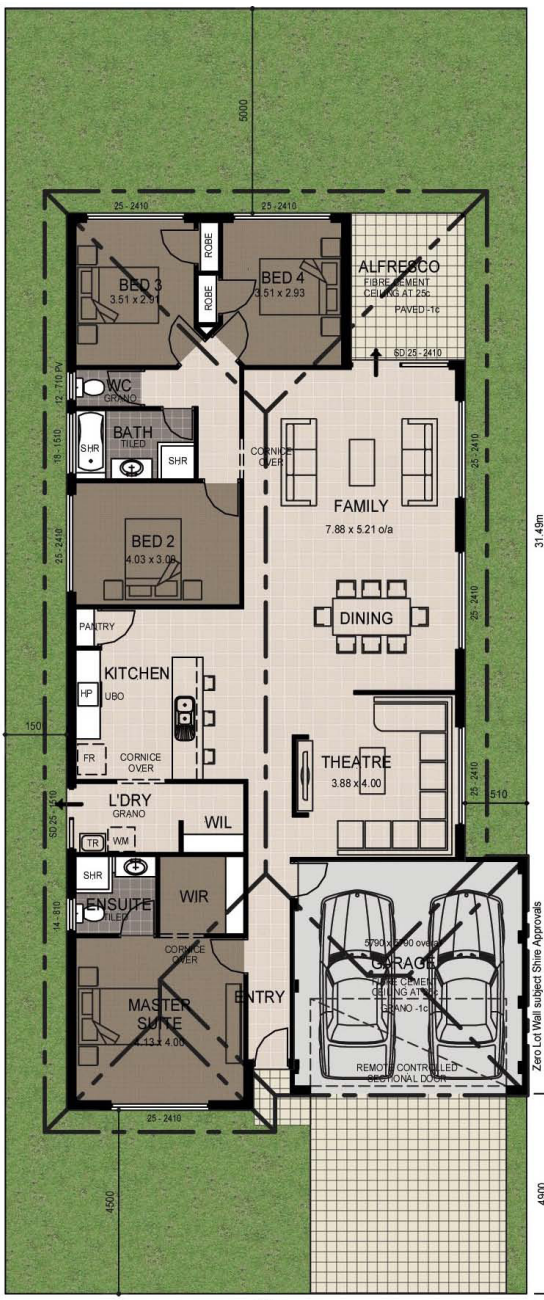


Flynn St, Canningvale House & Land Package from \$384,000



Render to front of master only

FRONT ELEVATION



- * Modern Elevation with featured render
- * 4 Bedrooms
- * 2 Bathrooms
- * Lounge/Theatre
- * Dining / Living
- * Alfresco with paving
- * Big Kitchen
- * Double garage with sectional door
- * Stainless Steel appliances
- * Other Plans available

Elevation & Plan for illustrative purposes only



Contact Ben Leitch 0417 355 58 or leitchb@plunketthomes.com.au