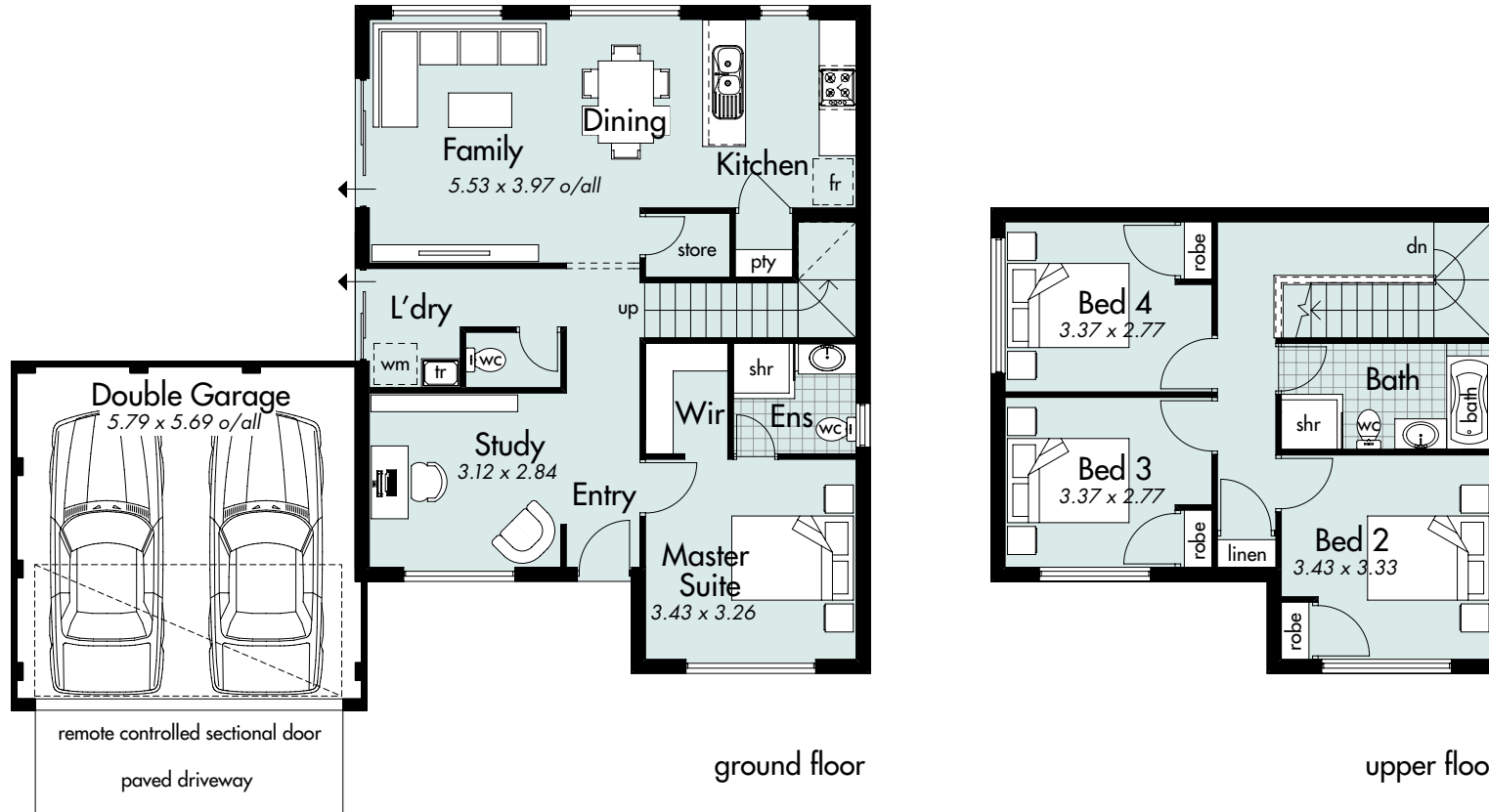


THE TOWNHOUSE



Ground floor area 84.62m² **House width** 13.99m
Upper floor area 56.93m² **House depth** 11.49m
Total area 173.81m²

Metro Ph: (08) 9333 4010
South West Ph: (08) 9780 9333
Geralton Ph: (08) 9921 8835

Display Centre Opening Times
 Monday and Wednesday 2-5pm
 Saturday, Sunday and Public Holidays 1-5pm

